

My New Project

CREATED ON
2025-02-20

LOCATION
5 Carriage Way
WF16 0NE Heckmondwike
England
GB

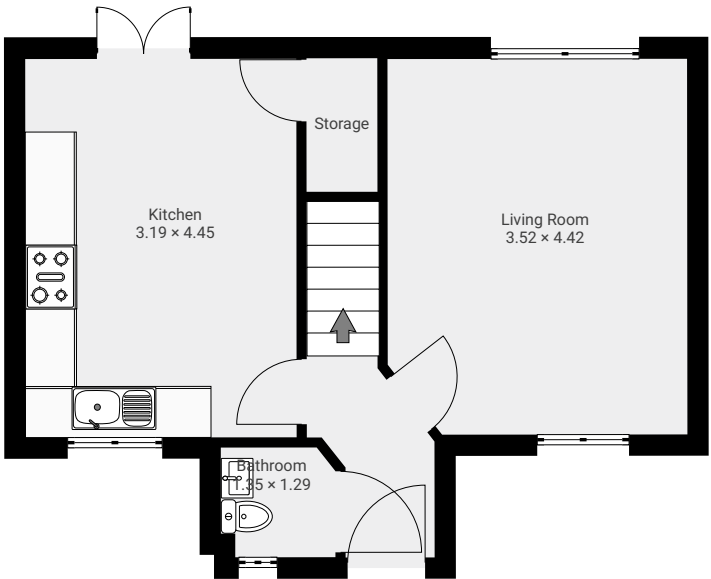
DETAILS
Total area: 85.40 m²
Living area: 75.87 m²

Northpoint360 Property Marketing
info@northpoint360.co.uk
www.northpoint360.co.uk
📞 0744 248 5428

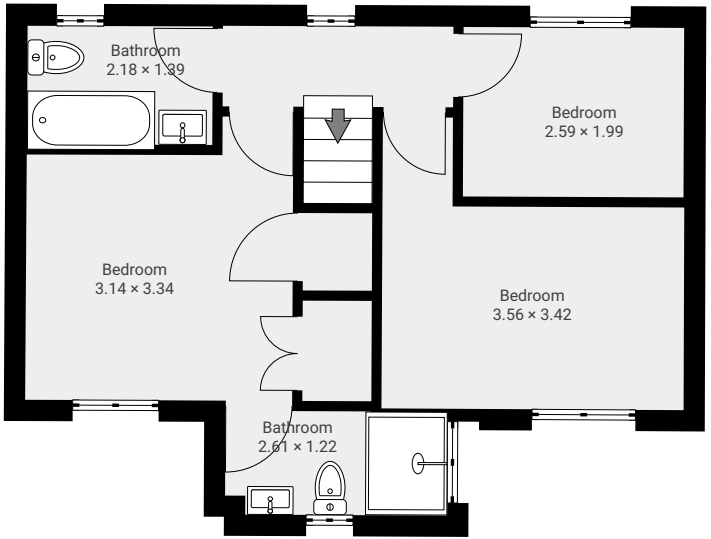
WHILST EVERY ATTEMPT HAS BEEN MADE TO ENSURE ACCURACY OF THE FLOORPLAN CONTAINED HERE, MEASUREMENTS OF DOORS, WINDOWS, ROOMS AND ANY OTHER ITEMS ARE APPROXIMATE AND NO RESPONSIBILITY IS TAKEN FOR ANY ERROR, OMISSION OR MIS-STATEMENT. PRODUCED BY NORTHPOINT360 PROPERTY MARKETING.

0 1 2 3m
1:89

▼ **Ground Floor** TOTAL AREA: 36.49 m² • LIVING AREA: 36.49 m² •



▼ **1st Floor** TOTAL AREA: 35.14 m² • LIVING AREA: 35.14 m² •



My New Project

CREATED ON
2025-02-20

LOCATION
5 Carriage Way
WF16 0NE Heckmondwike
England
GB

DETAILS
Total area: 85.40 m²
Living area: 75.87 m²

Northpoint360 Property Marketing

info@northpoint360.co.uk
www.northpoint360.co.uk
📞 0744 248 5428

WHILST EVERY ATTEMPT HAS BEEN MADE TO ENSURE ACCURACY OF THE FLOORPLAN CONTAINED HERE, MEASUREMENTS OF DOORS, WINDOWS, ROOMS AND ANY OTHER ITEMS ARE APPROXIMATE AND NO RESPONSIBILITY IS TAKEN FOR ANY ERROR, OMISSION OR MIS-STATEMENT. PRODUCED BY NORTHPOINT360 PROPERTY MARKETING.

0 1 2 3m
1:89

▼ Garage

TOTAL AREA: 13.77 m² • LIVING AREA: 4.24 m² •

