



HAMOND ESTATES
OUR GOAL IS ACHIEVING YOURS



3-5 Westgate, Heckmondwike, WF16 0HE

£1,000 Per month

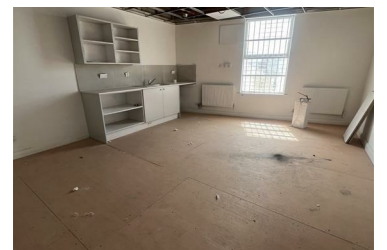
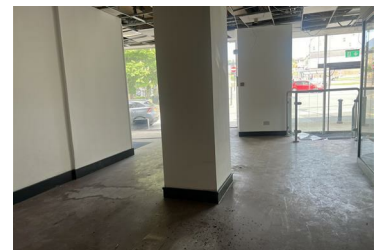


Nestled in the heart of Westgate, Heckmondwike, this commercial property is a gem waiting to be discovered. Boasting a spacious 1227 sq ft, this property is prominently located in Heckmondwike Town Centre, offering excellent visibility with its large glass frontage.

Situated conveniently across from the new Heckmondwike Bus Station Development, this property is perfectly positioned for businesses looking to thrive in a bustling area.

Imagine the endless possibilities that this property holds for your business venture. Don't miss out on the chance to make your mark in this vibrant location.

For all viewings, please get in touch with Hamond Estates office.



40 Wormald Street, Liversedge, West Yorkshire, WF15 6BE
Tel: 01924 400 330 Email: info@hamondestates.com